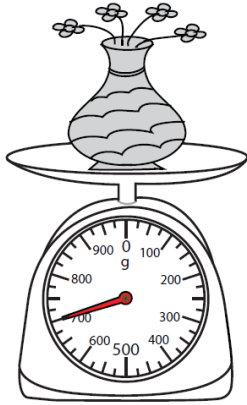


Year 5 - Measurement

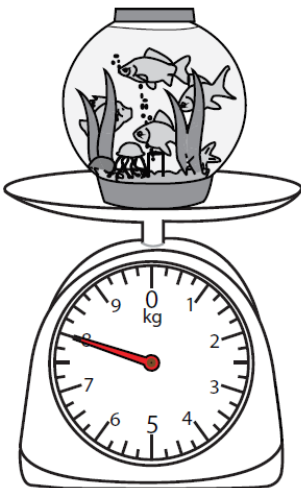
Week 4

Lesson 2 measurement -weight – problem solving using scales

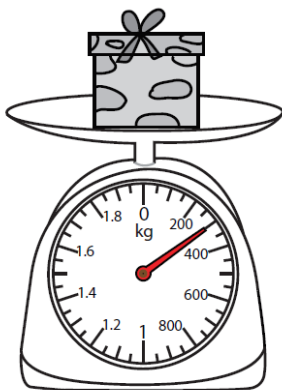
Challenge 1



a) add 0.3kg = 1kg



b) subtract 2,000g = 6,000g



c) Add 0.55kg = 0.85kg

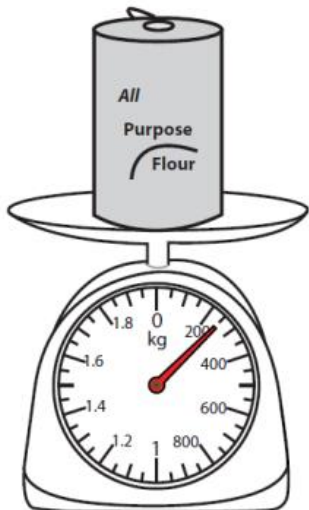
Challenge 2



a) Five more cakes, that weigh exactly the same as this one, are placed onto the scales. In kg, how much do the scales now say?

b) One cake is on the scales. 0.04kg of this cake is eaten. In kg, how much of this cake is left now?

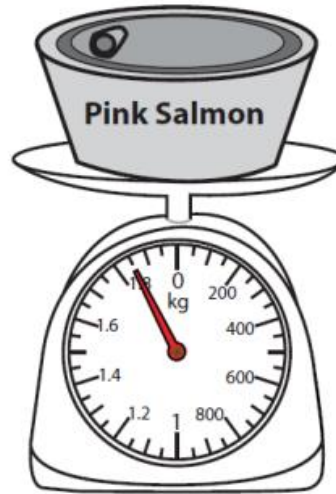
Challenge 4



a) 0.068kg of flour is added to this scale. How much flour is there now, in kg?

b) Nine times more flour than this is used. In kg, how much flour was used?

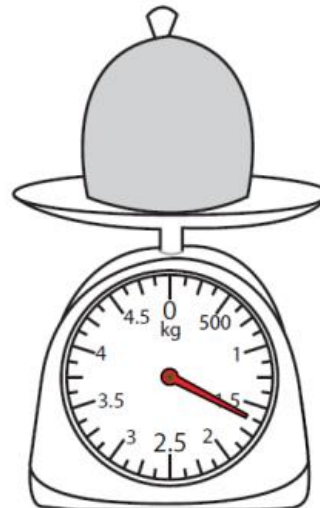
Challenge 3



a) This pink salmon is shared between five people. In grams, how much does each person get?

b) 929g of this pink salmon is eaten. In grams, how much is left?

Challenge 5



a) 827g of pie is eaten but then, 414g are added. How much do the scales say now, in grams?

b) This pie is shared between five people. In grams, how much do they all get?

